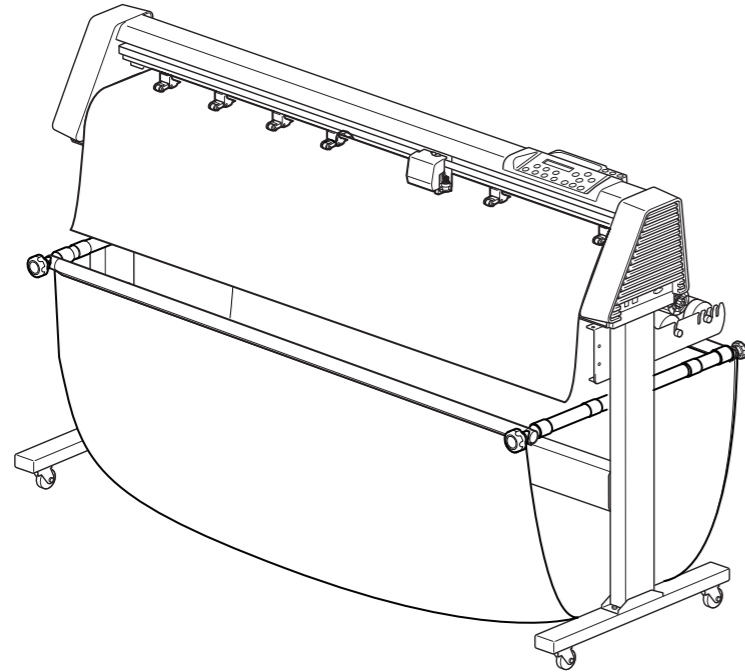


# SB-64/SB-54

## Sheet Basket Assembly Method (GR2-640/540)

### Sheet Basket

This sheet basket attaches to the GR2-640/540 main unit stand to hold material cut from the roll to keep this material clean from dirt and dust.



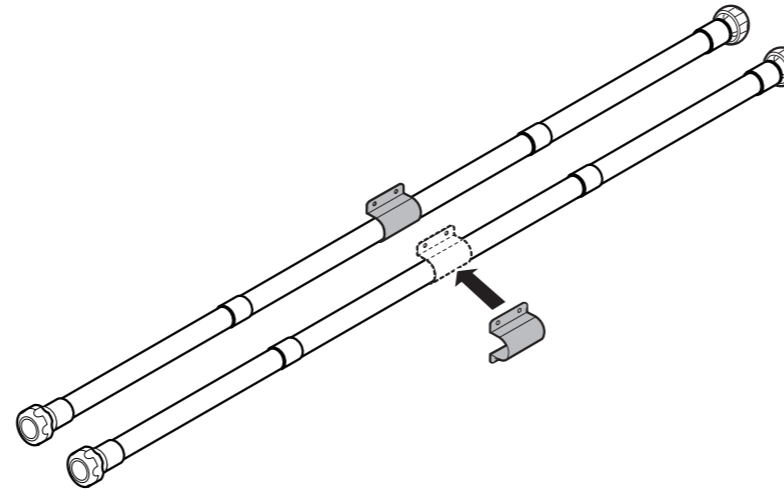
### Included Items

Basket (1)	Basket arms (2)	Basket rods (2)
Fixtures (2)	M3 bolts (8)	Hexagonal wrench (1)

### Assembly Method

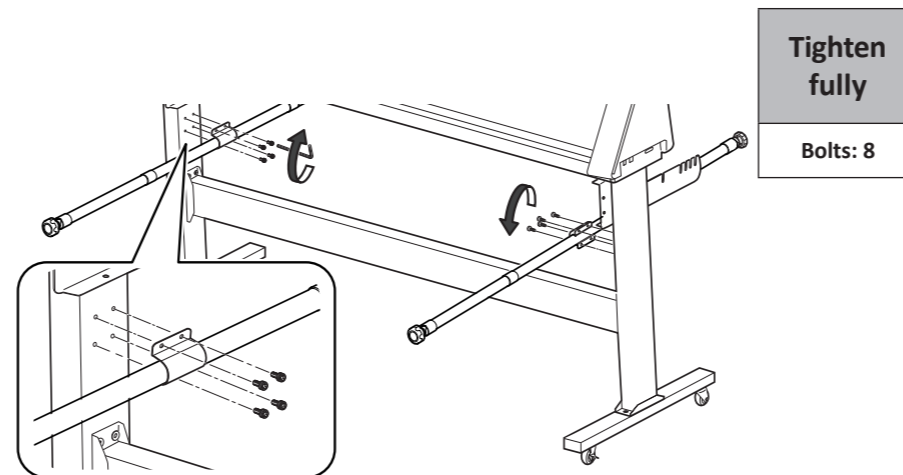
#### Procedure

- 1 Set a fixture in the center of each basket arm.

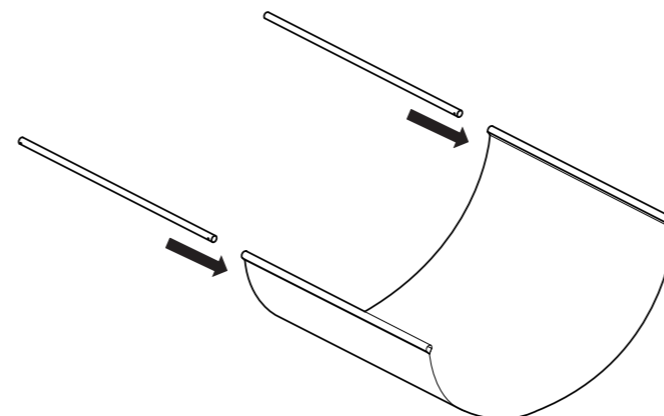


- 2 Attach the basket arms to the vertical stand.

Screw the fixtures into this stand with four M3 bolts on the left and right sides.

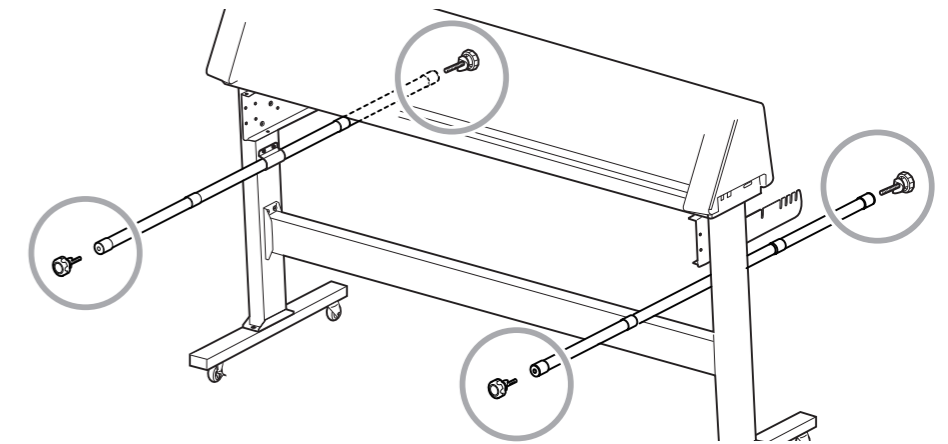


- 3 Insert the basket rods into the basket.

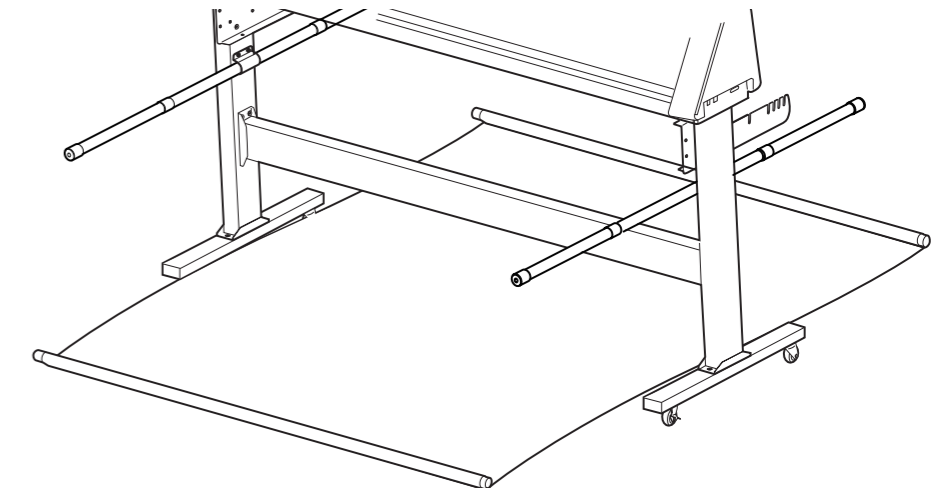


- 4 Attach the basket to the basket arms.

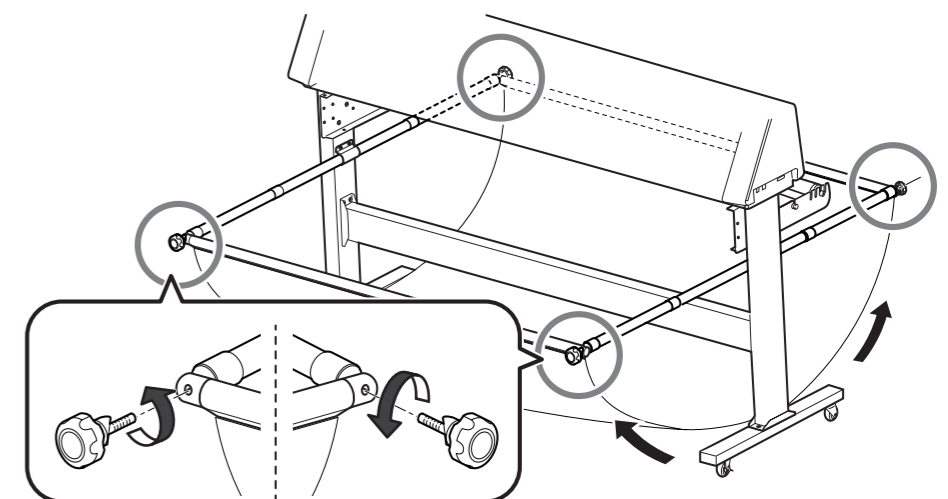
- 1 Remove the screws from the basket arm tips.



- 2 Lay the basket under the stand with the basket rods parallel with the machine.



- 3 Use the screws to secure the basket arms to the basket rods.



- 4 Change the basket arm length to adjust the basket looseness.

